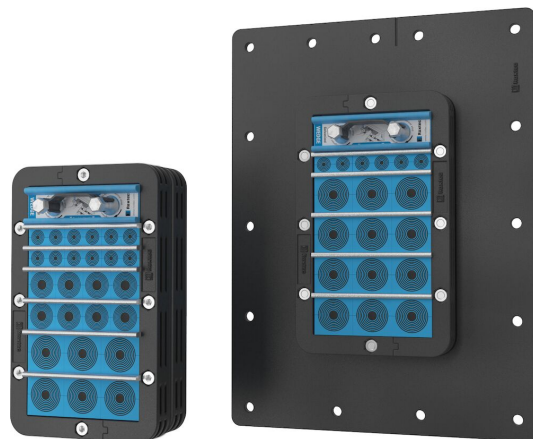




Roxtec KFO-gennemføring

Pladsbesparende letvægtsgennemføring.

Roxtecs KFO-gennemføring har en letvægtsramme af kompositmateriale, som er velegnet til konstruktioner, hvor det er vigtigt at holde vægten nede på et minimum. Rammen kan åbnes og kan dermed monteres omkring allerede trukne kabler. Tætningsmodulerne kan tilpasses kabler og rør af forskellig størrelse og kan bruges til indbygget reservekapacitet i gennemføringen.



- Letvægt
- Pladsbesparende
- Perfekt til eftermontage
- Hurtig og nem at montere
- Kan bruges til preterminerede kabler

Produktgenskaber



IP/UL NEMA

Byggekonstruktion



El-skabe og kabinetter

Normeringer og certifikater

Tæthed

- IP 66/67

Rammedimensioner

mm/kg

De nedenstående rammevarianter udgør et begrænset udvalg. Du kan se hele udvalget af rammer og konfigurationer på [roxtec.com](https://www.roxtec.com).

Title	Rammeåbninger	Pakkeareaö	Udvendige mål WxHxD	Åbningsmål w x h	Vægt	Art.-nr.
KFO 6x1	1	120 x 180	159 x 260 x 52	123(+0.5/-0.5) x 223(+0.5/-0.5)	1	KFO0000060059
KFO 6x1 WITH FLANGE	1	120 x 180	319 x 420 x 59	170(+2/-2) x 270(+2/-2)	1.6	KFO1000060059



Data om tætningskomponenter

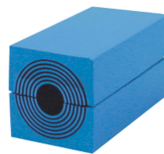
Tætningskomponenter



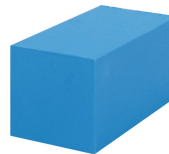
Lubrikant



wedge og wedgekit



RM-modul med Multidiameter™



RM fast kompensationsmodul



Stayplate



tætningskit

For merne information, besøg venligst [roxtec.com](https://www.roxtec.com).

The product information provided by Roxtec does not release the purchaser of the Roxtec system, or part thereof, from the obligation to independently determine the suitability of the products for the intended process, installation and/or use.

Roxtec gives no guarantee for the Roxtec system or any part thereof and assumes no liability for any loss or damage whatsoever, whether direct, indirect, consequential, loss of profit or otherwise, occurred or caused by the Roxtec systems or installations containing components not manufactured by an authorized manufacturer and/or occurred or caused by the use of the Roxtec system in a manner or for an application other than for which the Roxtec system was designed or intended.

Roxtec expressly excludes any implied warranties of merchantability and fitness for a particular purpose and all other express or implied representations and warranties provided by statute or common law. User determines suitability of the Roxtec system for intended use and assumes all risk and liability in connection therewith. In no event shall Roxtec be liable for indirect, consequential, punitive, special, exemplary or incidental damages or losses.

The Roxtec products are offered and sold in accordance with the conditions of the Roxtec General Terms of Sales. The latest version of the Roxtec General Terms of Sales can be downloaded from <https://www.roxtec.com/en/about-us/about-roxtec/general-terms-of-sales/>

We reserve the right to make changes to the product and technical information without further notice. Any errors in print or entry are no claims for indemnity. The content of this publication is the property of Roxtec International AB and is protected by copyright.

This document was generated on: 2024-04-12